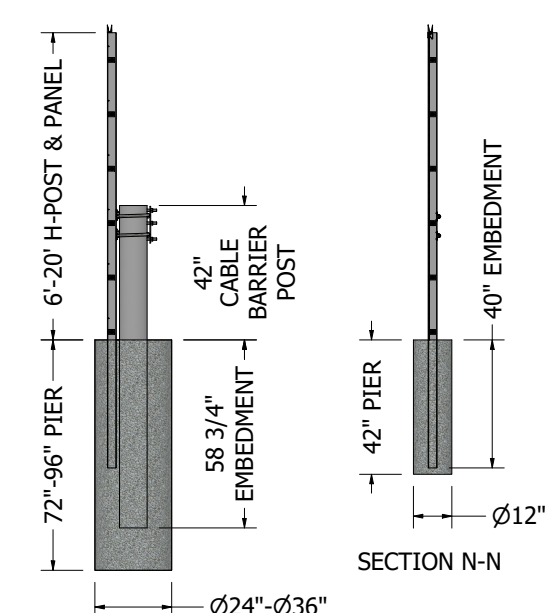
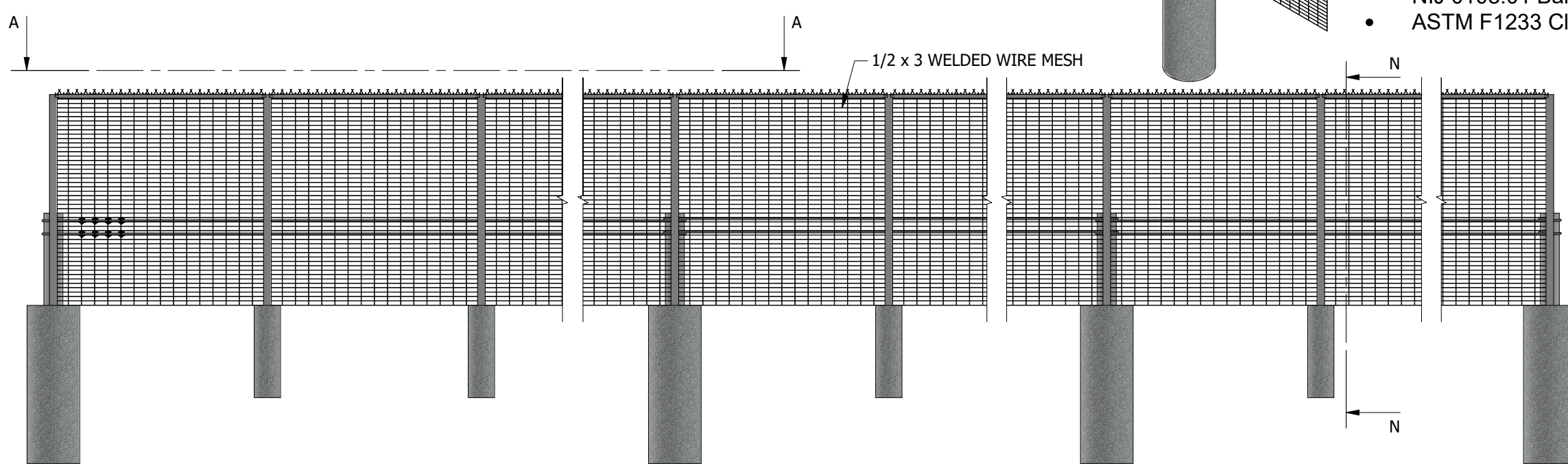
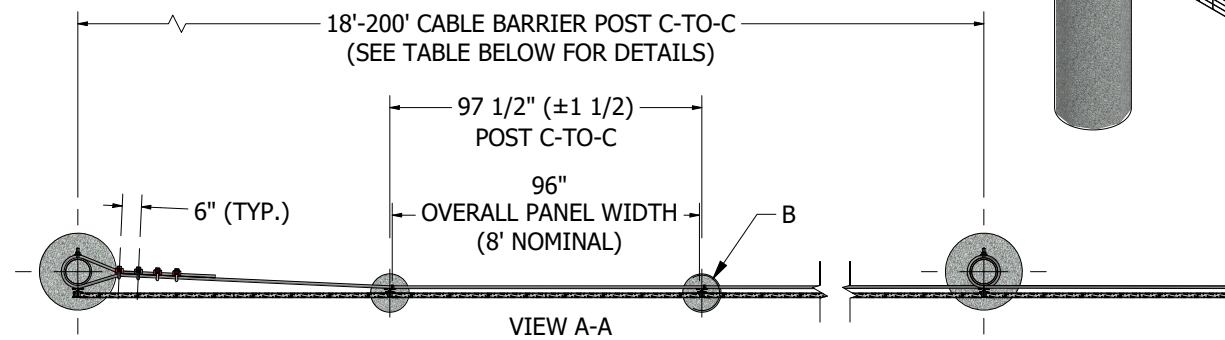
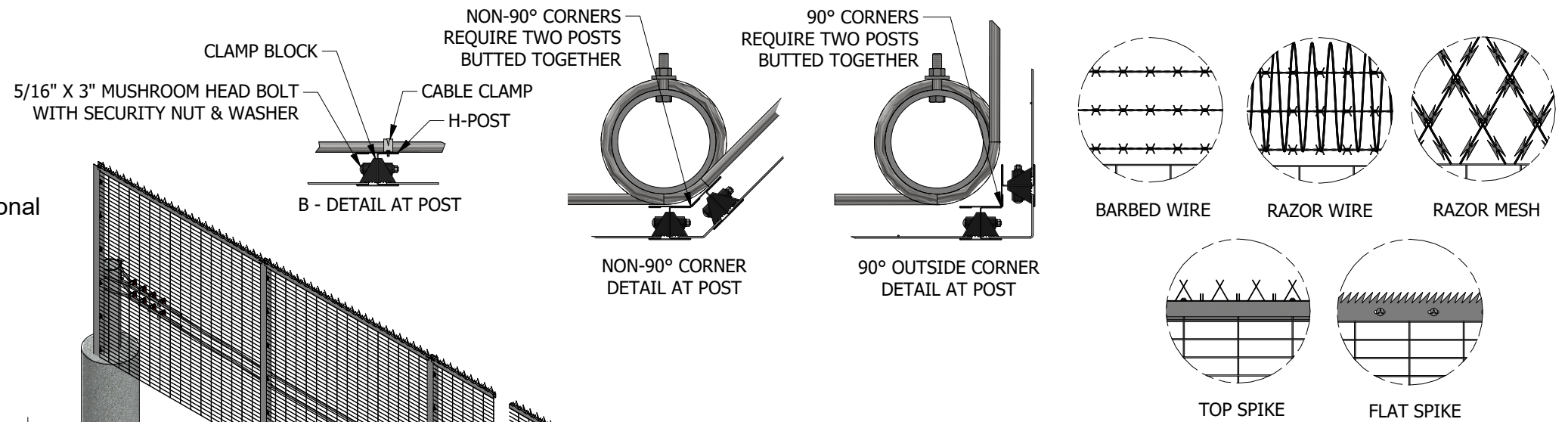


Product Specifications:

- 20 Year Warranty
- Fence Heights from 6ft. to 20ft.
- Modular Design for Easy Grade Changes
- No Exposed Fence Fasteners for Tamper Resistance
- WWM 6ga. through 10.5ga. for Non-Climb/Cut Features
- Fence & H-Posts are Galvanized then Powder Coated Black
- Cable Barrier Posts are Galvanized with Powder Coating Optional
- Color Options Available for Both
- ASCE 7 Wind Load Engineered up to 180mph (HVHZ)
- Proudly manufactured in the USA



Safety Ratings & Certifications:

- (Applicable to Qualified Configurations)
- ASTM F2656 M50:P1/P2 15,000 lb. Vehicle at 50 MPH ≈ 1.2 Million ft-lbs Vehicle Impact Energy
 - ASTM F2656 M30:P1/P2 15,000 lb. Vehicle at 30 MPH ≈ 450,000 ft-lbs Vehicle Impact Energy
 - USACE PDC F2656 DoD Anti-Ram Vehicle Barrier Certified
 - ASTM F2781 Low (L), Medium (M), & Aggressive (A) Threat Levels
 - UL 752 Bullet-Resisting Protection Standards
 - NIJ 0108.01 Ballistic Resistance Standards
 - ASTM F1233 Class IV Forced Entry Protection Rating

Rating	Cable QTY	Post Spacing	Post Size	Foundation Depth	Foundation Diameter	Rebar
M30/P1 (tested)	2	30'	12"	84"	30"	Yes
M30/P2 (tested)	2	200'	8"	72"	24"	No
M50/P1 (tested)	2	18'	12"	96"	36"	Yes
M50/P2 (tested)	2	200'	12"	84"	30"	Yes

<p>DIMENSIONS ARE IN INCHES</p> <p>UNLESS OTHERWISE SPECIFIED, TOLERANCES ARE:</p> <p>ONE PLACE (X.X) = ±0.100</p> <p>TWO PLACES (X.XX) = ±0.010</p> <p>THREE PLACES (X.XXX) = ±0.005</p> <p>FRACTIONAL = ± 1/16"</p> <p>ANGULAR = ± 1°</p> <p>THIRD ANGLE PROJECTION</p>	DATE: 5/6/2026	PROJECT: STANDARD DRAWING
	DRAWN BY: BCM	DESCRIPTION: SecureMesh Level II with Integrated Cable Barrier
	CHECKED BY:	DWG NO. AVBD1002-03
	MATERIAL:	REV.
SCALE: NTS		SHEET 1 OF 1

