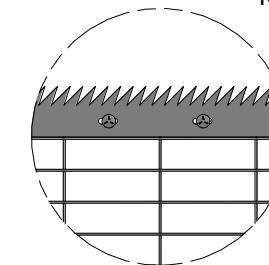
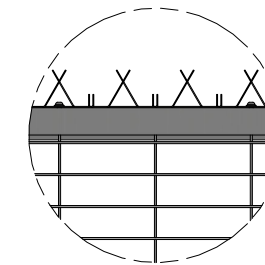
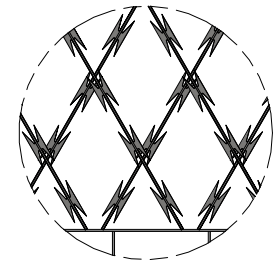
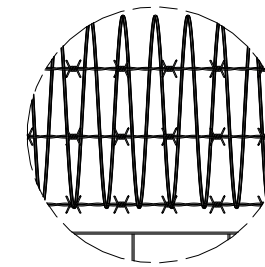
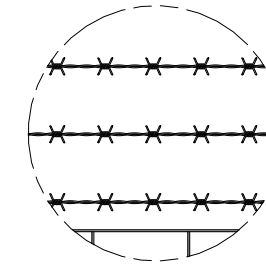
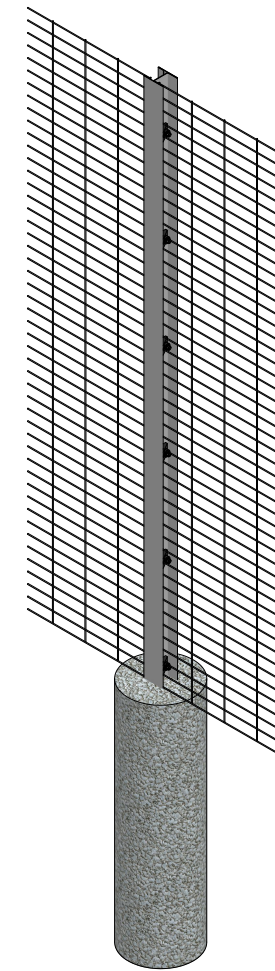
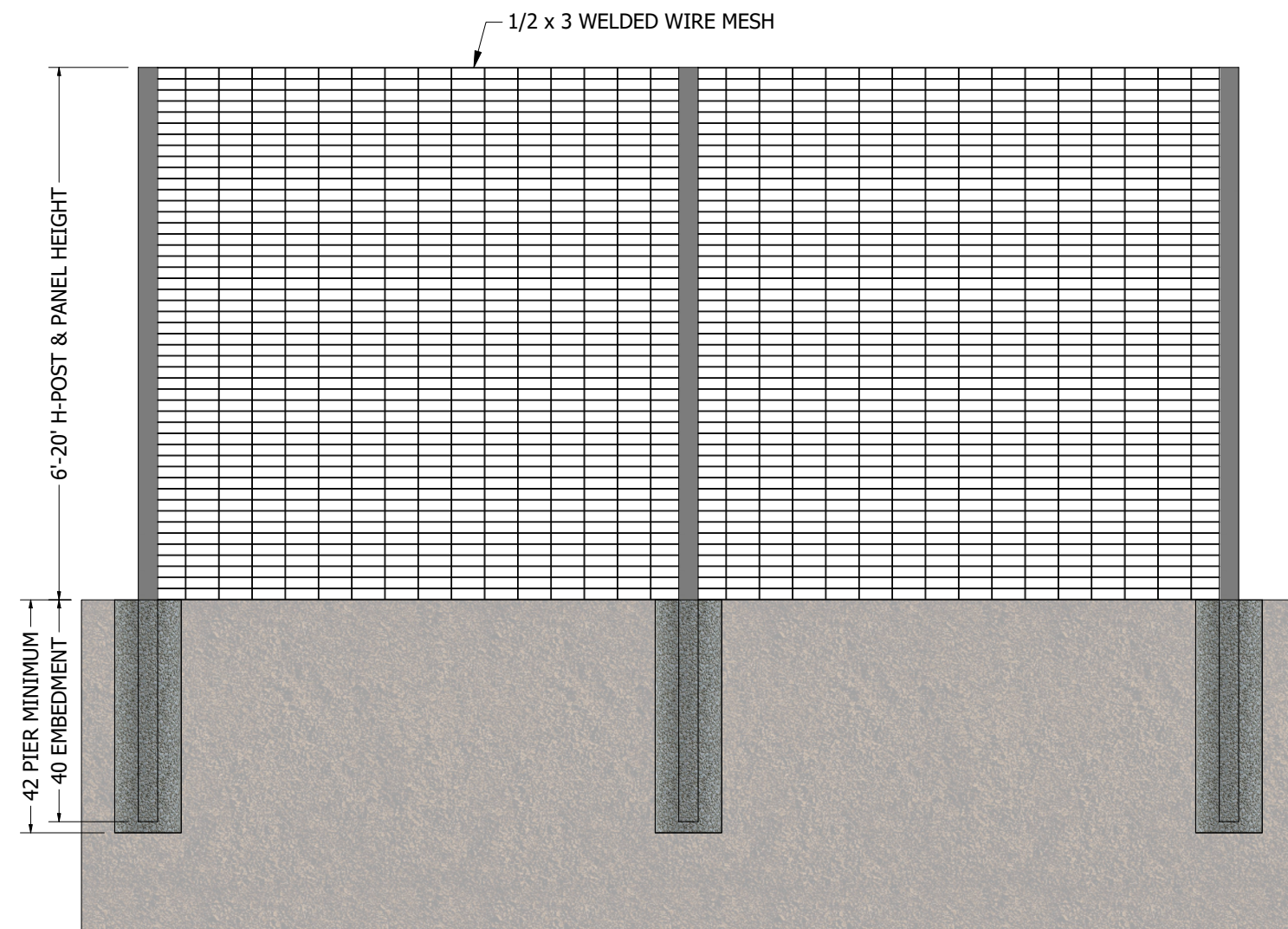
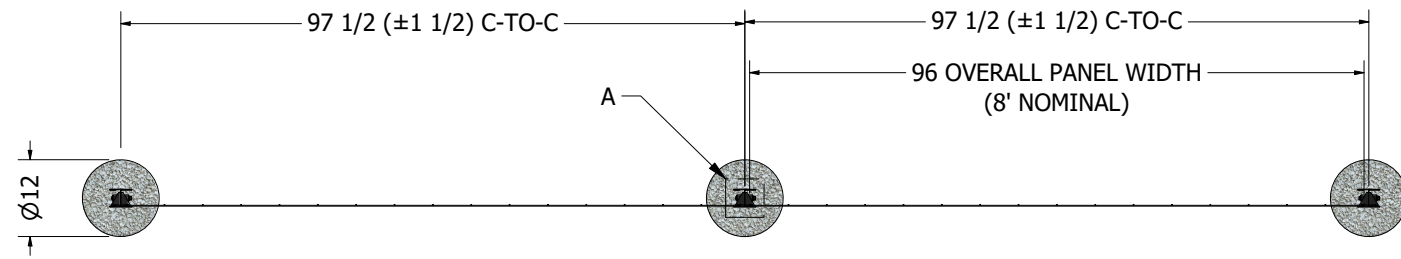
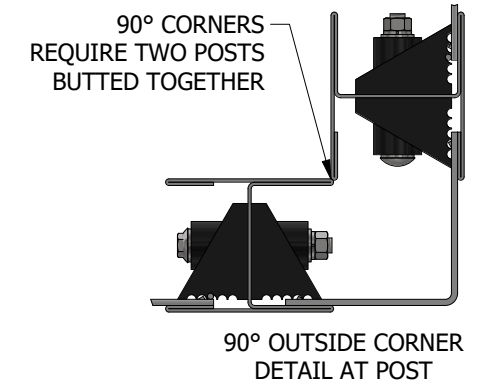
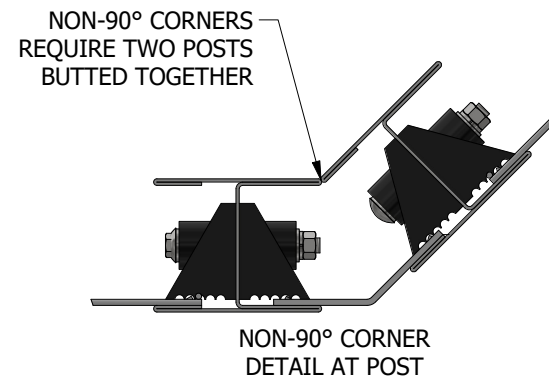
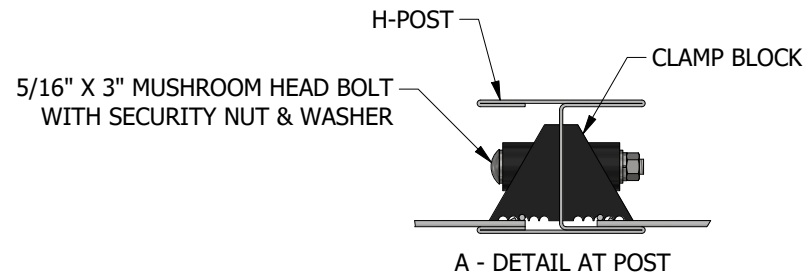


Product Specifications:

- 20 Year Warranty
- Heights from 6ft. to 20ft.
- Galvanized then Powder Coated Black
- Color Options Available
- Modular Design for Easy Grade Changes
- No Exposed Fasteners for Tamper Resistance
- WWM 6ga. through 10.5ga. for Non-Climb/Cut Features
- ASCE 7 Wind Load Engineered up to 180mph (HVHZ)
- *Proudly manufactured in the USA*



Safety Ratings & Certifications:

(Dependent on System Configuration)

- ASTM F2781 Low (L), Medium (M), & Aggressive (A) Threat Levels
- UL 752 Bullet-Resisting Protection Standards
- NIJ 0108.01 Ballistic Resistance Standards
- ASTM F1233 Class IV Forced Entry Protection Rating

<p>DIMENSIONS ARE IN INCHES</p> <p>UNLESS OTHERWISE SPECIFIED, TOLERANCES ARE:</p> <p>ONE PLACE (X.X) = ±0.100</p> <p>TWO PLACES (X.XX) = ±0.010</p> <p>THREE PLACES (X.XXX) = ±0.005</p> <p>FRACTIONAL = ± 1/16"</p> <p>ANGULAR = ± 1°</p> <p>THIRD ANGLE PROJECTION</p>	DATE:	PROJECT:		
	5/8/2026	STANDARD DRAWING		
	DRAWN BY:	DESCRIPTION:		
	BCM	SecureMesh Level II		
CHECKED BY:	DWG NO.	AVBD1002-01	REV.	
MATERIAL:	SCALE: NTS	SHEET 1 OF 1		