

**BSP**

BLACK SECURITY PRODUCTS



Anti-Vehicle  
Breaching  
Device (AVBD)

---

**PRODUCT  
CATALOG  
2024**

# TABLE OF CONTENTS

PRODUCT CATEGORY	PRODUCT SERIES #	PAGE
<b>CABLE BARRIER SYSTEMS</b>	AVBD 100 Series	<b>2</b>
<b>GATE SYSTEMS</b>	AVBD 200 Series	<b>3</b>
<b>BOLLARDS</b>	AVBD 300 Series	<b>4</b>
<b>WEDGE BARRIER</b>	AVBD 400 Series	<b>5</b>
<b>DROP ARMS</b>	AVBD 500 Series	<b>6</b>
<b>NET TYPE RESTRAINT BARRIER</b>	AVBD 600 Series	<b>7</b>
<b>MODULAR PORTABLE PROTECTIVE DEVICE (MPPD)</b>	AVBD 700 Series	<b>8</b>
<b>POST AND BEAM</b>	AVBD 900 Series	<b>9</b>
<b>SECURITY FENCE SYSTEMS</b>	AVBD 1000 Series	<b>10</b>

# CABLE BARRIER SYSTEMS

## AVBD 100 SERIES

MODEL	TEST	MODEL #
<b>M30 P1 PASSIVE CABLE BARRIER</b>	Tested at 90' post spacing	AVBD 131
<b>M30 P2 PASSIVE CABLE BARRIER</b>		AVBD 132
<b>M50 P1 PASSIVE CABLE BARRIER</b>	Tested at 20' post spacing	AVBD 151
<b>M50 P2 PASSIVE CABLE BARRIER</b>	Tested at 90' and 200' post spacing	AVBD 152

The BSP M50/30 Passive Cable Barrier (Anti-Ram Fence) has been utilized primarily for the US Dept of Defense (DoD), FBI, NSA, Nuclear and Top Secret Facilities as passive vehicle barriers that either secure a perimeter or funnel traffic to the active vehicle barriers at ACP locations. The BSP Passive Cable Barrier (Anti-Ram Fence) was designed for cost savings and easy installation. We can easily match an existing fence application by using the same ornamental pickets or typical chain link. BSP provides a passive vehicle barrier to meet the demands of various facilities and their various security requirements.

BSP's Passive Cable Barrier (Anti-Ram Fence) is the most cost effective and reliable product on the market. Due to the proprietary design that allows for no compression clamps, cable breaks or attachments at the line crash posts and corner posts. The system does not require any additional parts for direction change at any corner or line crash post. This allows for fast installation and keeps the cost low by not having to provide spelter fittings, compression clamps or cable breaks throughout the barrier fence line.

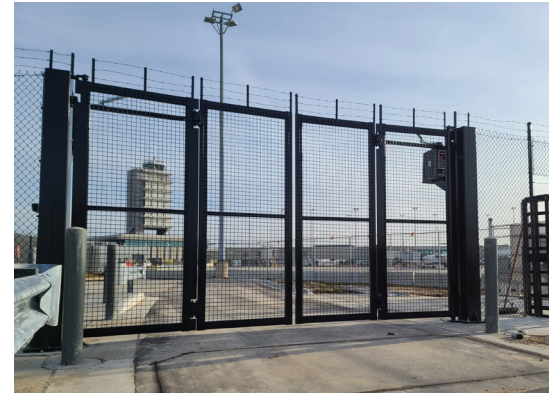


## GATE SYSTEMS

### AVBD 200 SERIES

MODEL	MODEL #
<b>BIFOLDING SPEED GATES</b>	AVBD 200
<b>BOX FRAME CANTILEVER (ALUMINUM)</b>	AVBD 201
<b>M30 CANTILEVERED SLIDE GATE</b>	AVBD 231
<b>M30 MANUAL SWING GATE</b>	AVBD 232
<b>M30 RETROFIT DOUBLE SWING</b>	AVBD 233
<b>M30 RETROFIT SLIDE GATE</b>	AVBD 234
<b>M30 STANDARD SLIDE GATE</b>	AVBD 235
<b>M50 CANTILEVER SLIDE GATES</b>	AVBD 251
<b>M50 SLIDING CRASH GATES</b>	AVBD 252
<b>M50 SWING GATES</b>	AVBD 253

Tested at 12'-36'



The BSP Anti-Ram Gates have been utilized primarily for the DoD, FBI, NSA, Nuclear and Top Secret Facilities as access control barriers. BSP has successfully installed these barriers on a variety of Military facilities in conjunction with our ACCS (Access Control Command System) fulfilling all AVB (Active Vehicle Barrier) and ACPCS (Access Control Point Control System) requirements.

We can easily match an existing fence application by using the same ornamental pickets or typical chain link. BSP provides an active vehicle barrier to meet the demands of various facilities and their high-volume traffic control needs.

#### STANDARD FEATURES

- ✓ Rated for extreme temperatures (-140° to 150° F)
- ✓ Welded tube steel framework
- ✓ Embedded crash cables
- ✓ Slide, swing, vertical pivot & drop designs
- ✓ Immediate reverse operation
- ✓ Mechanical or manual operation

#### OPTIONAL FEATURES

- ✓ Customizable control panels
- ✓ Remote control panels
- ✓ Visual deployment signals
- ✓ Audio alarms
- ✓ Traffic signals
- ✓ Battery back up system
- ✓ Vehicle detection modules
- ✓ Customized to match existing fencing
- ✓ Can be used to "harden" existing gates
- ✓ Custom sizes are available on request

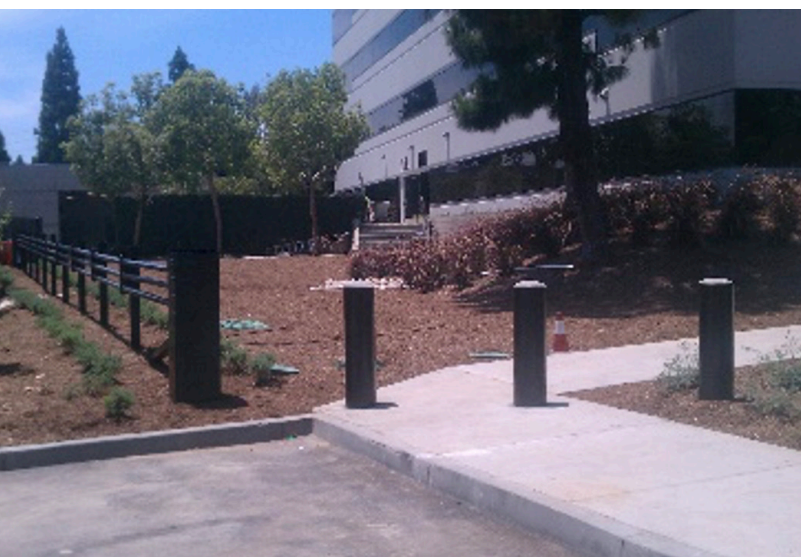
# BOLLARDS

## AVBD 300 SERIES

MODEL	MODEL #
6 INCH BOLLARD	AVBD 301
8 INCH BOLLARD	AVBD 302
DEPARTMENT OF STATE PRODUCTS (DS22,23,24,25,30,50,R)	AVBD 303
M30 BOLLARD	AVBD 330
M40 BOLLARD	AVBD 340
M50 BOLLARD	AVBD 350

BSP has a full line of standard and shallow mount bollards that are designed for perimeter security protection, pedestrian safety and traffic control. The bollards styles can vary by individual site needs and aesthetics design. BSP offers Standard (deep mount), Shallow mount, and manual removable bollards. Our bollard line offers products that secure perimeter security from levels of M30 P1 through M50 P1.

All of our products and materials are manufactured in the United States and carry the Made in America seal of approval. BSP believes that protection of the area of concern can be aesthetically pleasing without compromising safety and protection. Our wide variety of passive bollards provides the reliability and level of security for all types of projects.



## WEDGE BARRIER

### AVBD 400 SERIES

MODEL	TEST	MODEL #
<b>M50 P1 WEDGE BARRIER</b>	Tested at 10'	AVBD 451
<b>M50 P1 EXTRA SHALLOW WEDGE</b>	Tested at 10'	AVBD 451ES



BSP offers a full line of permanent M50 and temporary M30 surface mounted wedge barriers that are certified to meet ASTM F2656 crash standards M30/M50. The Barriers are designed for surface mounting applications and have been specifically developed to be mounted on an existing concrete driveway. The model 430 Surface Mounted Plate Barrier is operated with a self-contained power source, complete with electric motor unit that includes a universal programmable logic controller (PLC) and is available with emergency fast operation (EFO) as an option. Designed with innovative cutting-edge technology the Model 430 Surface Mounted Plate Barrier provides the

highest level of security for a surface mounted barrier and ensures a fast economical installation, smooth operation, and easy maintenance.

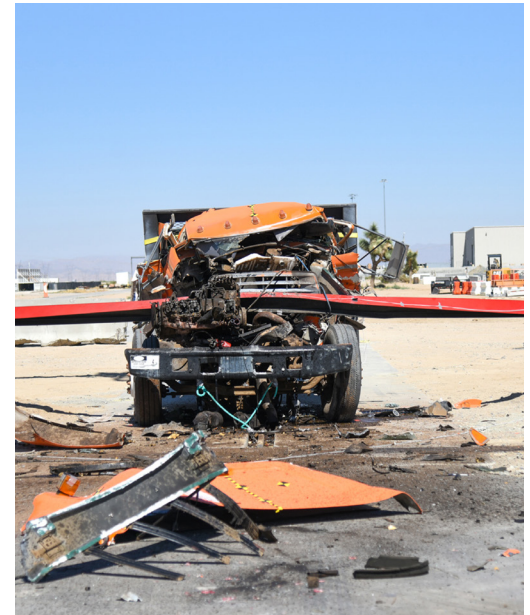
The permanent M50 Wedge Barrier is the “go to” product for many clients when the design calls for final Denial Barriers. Fast operation for quick response times and industry leading stopping power the permanent fixed M50 Wedge Barrier checks all the boxes. Cycle tested to withstand submersion, sand and debris the barrier can take anything the site can throw at it and continue to operate. The BSP M50 Wedge Barriers is the most cost effective and reliable Wedge on the market.



## DROP ARMS

### AVBD 500 SERIES

MODEL	TEST	MODEL #
M30 P1 DROP ARM	Tested at 24'	AVBD 531
M50 P1 DROP ARM	Tested at 24'	AVBD 551
M50 P2 DROP ARM	Tested at 24'	AVBD 552



BSP offers a full line of crash tested Drop Arm Barriers designed for entrances where vehicular traffic needs to be controlled or when there is a threat of a vehicle ramming attack.

Critical design elements include barrier arm length, frequency of operation, and location to name a few. BSP offers a full line of Drop Arm

Barriers that are crash tested to meet ASTM F2656 crash standards M30/M50.

Drop Arm Barriers are available with several enhancement options to easily adapt to suit any application. BSP's Drop Arm Barriers have been developed with features and functions to allow for easy installation, maintenance and service.



# NET TYPE RESTRAINT BARRIER

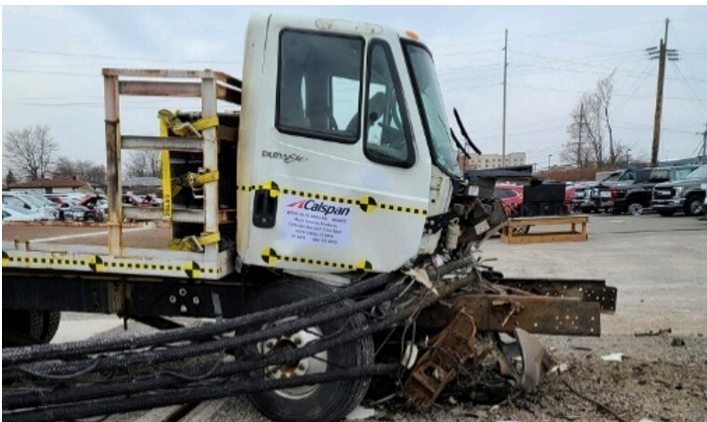
## AVBD 600 SERIES

### MODEL

### MODEL #

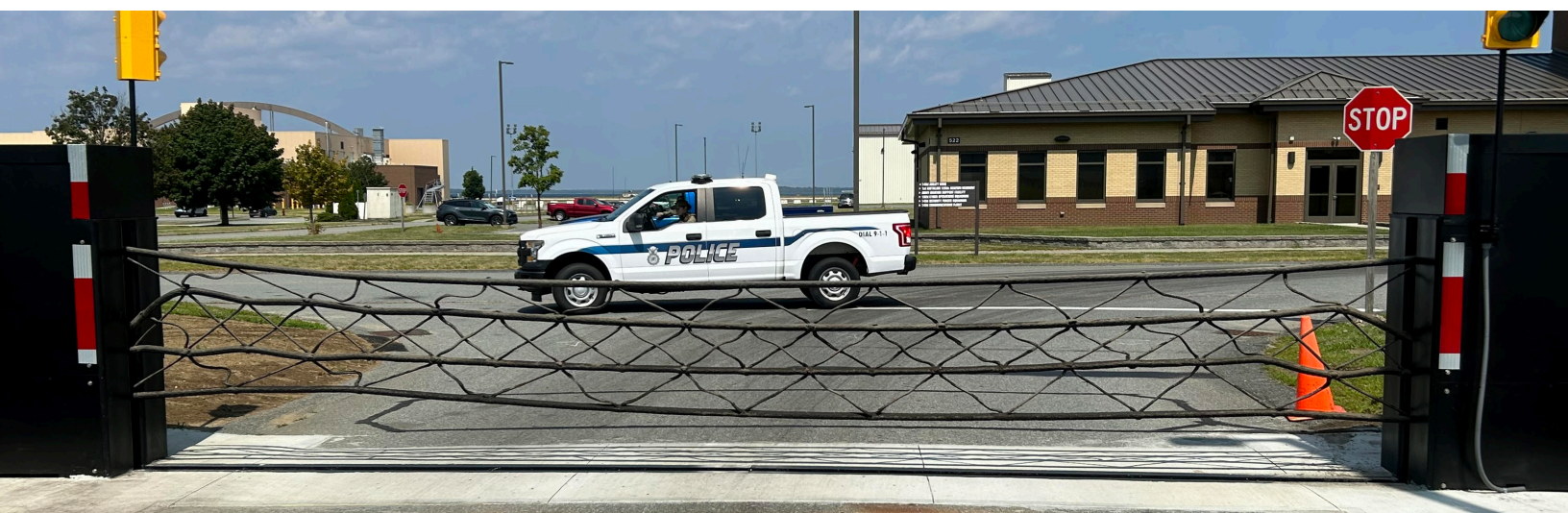
**DEFENDER NET BARRIER** (Tested at 21' and 72')

AVBD 651



BSP's Defender Net Barrier system has revolutionized the perimeter security industry. In a world where systems are designed to stop vehicle ramming attacks by brute force, we have designed a solution that could stop threats while minimizing unnecessary liability. This barrier is the culmination of our 20 years designing and engineering.

Traditional net barrier systems tend to develop mechanical issues as they rely on motors pulling in opposing directions which keeps the Net under load or having shear pins that allow for easy breach. BSP engineered a better designed barrier which resolves these "old" issues. The Defender Net Barrier is crash tested to meet ASTM F2656 Crash Standards and has received a rating of M50/P2 for both its 18ft. and 72ft. widths.





# MODULAR PORTABLE PROTECTIVE DEVICE (MPPD)

## AVBD 700 SERIES

MODEL	MODEL #
<b>M30 P2 PASSIVE BARRIER</b> (M30 P2 Tested)	AVBD 731
<b>MPPD DROP ARM</b>	AVBD 732
<b>MPPD SENTRY</b>	AVBD 733

The MPPD system's primary characteristic is the vehicle borne threat protection element. The MPPD system has been tested and certified to ASTM level M50 and M30 and is Department of Defense approved. With over a dozen ASTM real life crash tests performed, BSP was able to glean valuable information from our past while innovating and designing the MPPD system.

This is truly a one-of-a-kind barrier system that is unlike any other on the market. The BSP MPPD system can stop a 15,000 lbs. vehicle traveling at speeds from 30mph to 50mph within 1-7 meters. No other portable barrier on the market offers this range of crash test certification or capabilities.



## POST & BEAM

## AVBD 900 SERIES

MODEL	TEST	MODEL #
POST & BEAM	M50 Tested at 30' post spacing	AVBD 951



Although not as cost effective as the cable barrier systems the M50 Certified Post and Beam has become more popular due to the updated 2020 ASTMs changing the penetration reference points for passive cable barriers. Since the passive cable barriers are now

measure from the front of cable instead of back of post, the rigidity in a post and beam makes it easier to pass those tests. Although harder to install and more costly the Post and Beam has become more popular with vehicle barrier companies due to the new testing requirements.



# SECURITY FENCE SYSTEMS

## AVBD 1000 SERIES

MODEL

MODEL #

**ANTI SCALE/CUT ULTRA SECURITY FENCE SYSTEM**

AVBD 1001



Black Security Products, LLC. (BSP) line of Security Welded Mesh Fencing Systems are designed for ultimate perimeter protection, while still maintaining an aesthetically pleasing appearance. Utilizing our Welded Wire Mesh Panels, these fence systems offer security that exceeds that of standard Chain Link fence or Ornamental Iron fence styles. The design allows for deterrence of cutting or climbing and can be sold with anti-dig and anti-ram options. Our Security Welded Mesh Panels can be installed

in a variety of different configurations from what is utilized on our propriety Modular Portable Protective Device (MPPD), to our Ultra-Secure Anti-Climb/Cut Fence System.

The Ultra-Secure Anti-Climb/Cut Fencing System consists of double Welded Mesh Panels, overlapping to create the ultimate in an anti-breach barrier. Utilizing vertical flat bar bracing between our posts, the system will deter/delay/deny the most serious breaching attempts.





**BLACK SECURITY PRODUCTS HELP SECURE THE WORLD'S CRITICAL INFRASTRUCTURE  
AND KEY ASSETS WITH ANTI-VEHICLE BREACHING DEVICES.  
CONTACT US TODAY TO LEARN ABOUT THE BEST SOLUTION(S) FOR YOUR PERIMETER SECURITY NEEDS.**



**BLACK SECURITY PRODUCTS, LLC**

**+1.512.926.0800 | [WWW.BLACKSP.COM](http://WWW.BLACKSP.COM)**