



BLACK SECURITY PRODUCTS

FOLDING SPEED GATES



GATE SYSTEMS
COME IN

**UNIQUE
BI-FOLDING
DESIGN**

Black Security Products, LLC. (BSP) line of Bi-Folding High Speed Security Gates are designed to maximizing security and functionality. The Folding Gate systems come in a variety of options and configurations. By utilizing the unique bi-folding design BSP has minimized the gates footprint, so these gates are perfect for confined spaces. The design also allows for fast operation times, allowing for higher rates of vehicle access than any other gate on the market.

The Folding Speed Gates come in a wide range of configurations, from Welded Wire Security Mesh, Chain Link, Ornamental Iron, Solid Plate Steel to Palisade Security Pickets. Just as configurable, are its color finishes and features. From Galvanized, PVC Coated and Powder Coated, to any color scheme imaginable. The Gates come in all sizes and styles, from cantilevered to track systems, which allows for our gates to meet any height requirements, while maintaining speeds of 4 to 7 seconds.



www.blacksp.com

BSP FOLDING GATE

MAXIMIZING SECURITY AND FUNCTIONALITY

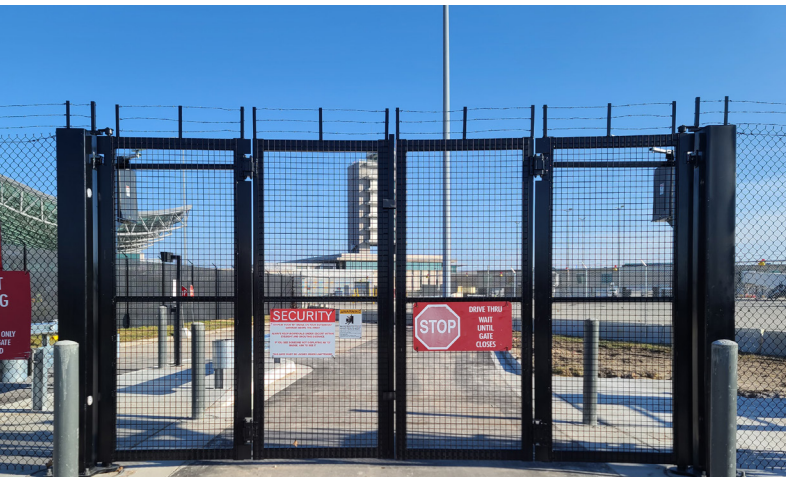
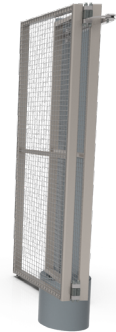
Allowing for higher rates of vehicle access than any other gate on the market.



OPERATION AND CONTROLS

The operability is what truly sets our Folding Speed Gates apart. From power requirement options that can run off 24v or 115/230/480 VAC single phase to 36VDC solar panel. The BSP Folding Speed Gates come standard with battery backup that can operate the gate during power loss, for up to 50 cycles. The interface with our Gates is simple and can communicate with any control systems on the market, from any manufacturer. If it is a keypad, proximity card, push-button, smartphone or any other device, our Gates make it easy to connect and communicate.

The BSP Folding Gates are UL 325 2018 Compliant and UL 991 Compliant. Our gates can utilize any safety device on the market. All or our Folding Speed Gates come with a standard 3-year commercial warranty.



STANDARD FEATURES:

- UPS (Battery Back-Up) up to 50 cycles
- 4 to 7 Second Opening/Closing Speeds
- Cantilever or Track Systems
- Galvanized, PVC and Powder Coated finishes
- Heights up to 15 ft.
- Widths up to 34 ft.
- Mesh and Security Picket Infill
- Temperature Range: -40 F to 160 F
- 24/115/230V DC/AC 20 amp dedicated
- Duty Cycle: Continuous

